



**BETHLEHEM LUTHERAN**  
1121 Georgia Avenue, Sheboygan, WI 53081

Non-Profit Org  
U.S. Postage  
**PAID**  
Sheboygan Falls, WI  
Permit No. 11

Address service requested

## CONNECT WITH US

### Bethlehem Lutheran

1121 Georgia Avenue  
Sheboygan, WI 53081

[www.ourbethlehem.com](http://www.ourbethlehem.com)

Church: (920) 452-4331  
[infochurch@ourbethlehem.com](mailto:infochurch@ourbethlehem.com)

School: (920) 452-5071  
[infoschool@ourbethlehem.com](mailto:infoschool@ourbethlehem.com)



[www.facebook.com/  
ourbethlehem](http://www.facebook.com/ourbethlehem)



[https://twitter.com/  
ourbethlehem](https://twitter.com/ourbethlehem)

Rev. J. Patrick Niles  
*Administrative Pastor*

Patrick Vanic  
*Principal*

## WORSHIP & BIBLE STUDY OPPORTUNITIES

### Worship Times

Saturday - 5:30pm

Sunday - 8:00am & 10:30am

Wednesday - 6:00pm

### Bible Studies

Saturday evening ~ 4:15 to 5:15pm

Sunday morning ~ 9:15 to 10:15am

# June 2023

## MEMBERSHIP



Lutheran Church  
Missouri Synod



Sheboygan Lutheran  
High School  
Association



Sheboygan Area  
Lutheran Schools  
Association

# June 2023

Sun

Mon

Tue

Wed

Thu

Fri

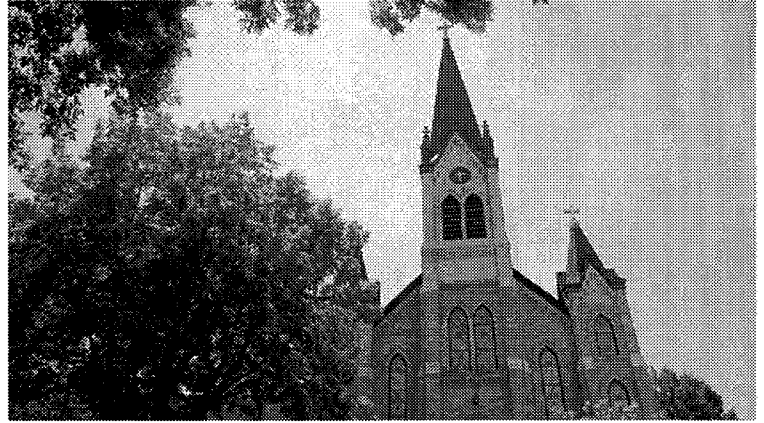
Sat

				1	2	3
					SALSA 8th Grade Graduation	Bible class 4:15pm Worship w/HC 5:30pm
4	5	6	7	8	9	10
Worship w/HC 8:00am & 10:30am Alaska send-off, 8:00am Bible class 9:15am Elders meeting 11:45am			Worship w/HC 6:00pm	Alaska Mission Team departs 		Bible class 4:15pm Worship w/HC 5:30pm
11	12	13	14	15	16	17
Worship w/HC 8:00am & 10:30am Bible class 9:15am		Quilters 9:00am	Worship w/HC 6:00pm			Alaska Mission Team returns Bible class 4:15pm Worship w/HC 5:30pm
18	19	20	21	22	23	24
Worship w/HC 8:00am & 10:30am Bible class 9:15am Father's Day			Worship w/HC 6:00pm Parish Planning Council meeting 7:00pm	July Visitor Deadline (noon)	LHS Golf Outing Quit Qui Oc 10:00am	Bible class 4:15pm Worship w/HC 5:30pm
25	26	27	28	29	30	
Worship w/HC 8:00am & 10:30am 2023 High School Graduates in church 8:00am. Coffee hour to follow. Bible class 9:15am		Quilters 9:00am	Worship w/HC 6:00pm Voters meeting 7:00pm			

## **FROM THE DESK OF PASTOR NILES**

### **School Is Out For Summer But Church Is Not**

The summer always brings a very different environment around the Bethlehem's campus. Gone is the daily commotion of the school children. When school is out, it can often seem very lonely around the church and school. However, the school is not the only place that is sometimes quieter during the summer. Statistically, attendance at the Divine Services are often quieter too. As we enter the summer season and bid farewell to another school year, it is crucial to remember that while school may be out, the church continues to play a vital role in our lives.



We believe that worship is a means of grace through which God comes to us and bestows His blessings. Through the preaching of God's Word, the administration of the sacraments, and the gathering of believers, God's grace is freely offered and received.

Worship is not merely a ritual or tradition; it is a sacred encounter with the living God, where we are nourished, refreshed, and strengthened in our faith. Christ is present with You in His Word and His supper that gives you the strength for everything that is going on in Your life. The devil does not take a break from you over the summer. He is there with his temptations and assaults. Therefore, it does not make any sense to take a break from the very power that helps you resist those temptations and assaults.

As we go about our vacations and family outings this summer, it can often be easy to separate ourselves and our families from others. It is easy to go a while without seeing each other. Gathering together for worship fosters a sense of community among believers. It is a time when we join with our fellow brothers and sisters to receive Christ and to offer our praise and adoration. Through corporate worship, we share in the joys and sorrows of our church family, supporting and encouraging one another as we walk together in our lives in Christ. It is in the fellowship of worship that we experience unity and the power of the Holy Spirit working among us.

Worship also provides an opportunity to hear and receive God's Word proclaimed. Through faithful preaching and teaching, we are equipped with the knowledge and understanding of God's truth. The Scriptures are opened and explained, guiding us in our daily lives and nurturing our faith. Regular participation in worship allows us to grow in wisdom and discernment, grounded in God's unchanging Word.

As the school year comes to an end and the summer season begins, let us prioritize regular participation in worship. May we never underestimate the power and importance of gathering together as the body of Christ around the body and blood of Christ. Let us approach worship with reverence, anticipation, and a heart open to encounter the living God who continues to transform our lives.

In Christ,

Pastor Niles



With the Alaska Mission Trip right around the corner, please take a moment to read this recent message from Alaska Mission For Christ.

God's richest blessings to Jenna, Amy, Renee, Brian, Maddie, Sofia, Maxwell, Raymond, Katie, Ava, Ayden, Jozie and Ally.  
Safe travels!

### **A Symphony of Hope**

Amidst the breathtaking landscapes of Alaska, a symphony of transformation unfolds as the snow surrenders to the warm embrace of lengthening days. In this season of renewal, we at Alaska Mission for Christ are filled with uncontainable excitement as God unleashes His Spirit through the arrival of multiple devoted mission teams. Your unwavering support, prayers, and partnership set this symphony in motion. Together, we are igniting hope and spreading the life-transforming Good News of Jesus!

As we embark on this busy time of ministry, we implore you to join us in fervent prayer, seeking God's divine guidance and abundant provision. May His Word resound in the hearts and actions of our dedicated volunteers as they traverse the vast expanse of our beloved state, carrying the radiant message of Resurrection hope to individuals and families thirsting for Christ's healing love.

But before we set our sights on the horizon of future endeavors, let us bask in the glow of recent triumphs. Anchorage students from Anchor Lutheran recently embarked on an immersive journey alongside our LMC Coordinator, Nate Milan, in Fairbanks. Together, we forged a tapestry of mission activities, supporting the Open Arms Child Development Center (LCMS), weaving threads of encouragement into personal notes destined for villages, delving into the enigmatic tapestry of interior Alaskan culture, and embarking on a profound spiritual journey through the pages of Scripture.

With your unwavering commitment to sharing the love of Jesus, lives are transformed, hearts are rekindled with hope, and communities are forever altered. Your contributions, through prayer, financial support, and volunteering, serve as the catalyst for change, infusing the lives of Alaskans with Christ's saving love.

In the depths of our prayers, we seek the Lord's favor upon upcoming missions, ensuring the safety of our teams as they navigate uncharted territories and the miraculous transformation of hearts and lives across Alaska. Pray with us, for there is power in the cries of the saints!

# June News

## WHAT DO WE FIND WHEN WE ACTUALLY INVEST OURSELVES IN OUR CHURCH?

- 1). A place to belong and to be loved & accepted.
- 2). A place to grow spiritually.
- 3). A place to be a part of something bigger than ourselves;  
to be a part of something we'd never do alone.
- 4). A place to be fellow citizens with the saints and belong to the household of God.  
These seem like "pretty good returns" on our investment, don't you think?

## BOARD OF PROPERTIES UPDATE

- ◆ The big tree and all of the cedars that were located on our new property were recently taken down. At this point we will probably seed the dirt area until we update our master site plan.
- ◆ We contacted AT&T and they advised that we could remove the telephone pole located on the new property.
- ◆ The replacement of the sidewalk in front of the new property has been added to our list of improvements.
  - ◆ A donation of \$11,500 was received, which allows us to move forward on the door (fob) project.
    - ◆ Exterior surveillance cameras are being installed.
    - ◆ The installation of the interior surveillance cameras is almost complete.
      - ◆ A ceiling microphone will be installed in the gymnasium.
      - ◆ Bethlehem's 3 copy machines will be replaced in June.
  - ◆ The stained glass window project continues. 1Glass will be installing several restored windows soon.

## BOARD OF ELDERS UPDATE

- ◆ Our membership stands at 1,250. We have been working over the last year to have our membership reflect the actual members. We will be sending out letters to members whose names have not appeared in the red record of fellowship books during the past 3 months. Please continue to sign this book each time you are at worship and please encourage other members to sign in as well.
  - ◆ On Sunday, May 21, 2023, we received 13 new families into membership. Welcome!
    - ◆ On Sunday, May 21, 2023, we received 14 new Confirmands!

## VOTERS' MEETING

The next Voters' meeting will be on Wednesday, June 28th at 7:00pm. Please plan to attend.

## THE 2023 BETHLEHEM STAR GALA PRESENTS: "AN EVENING OF DENIM AND DIAMONDS"

Save the date: Saturday, September 23rd, 2023!

How can you help? Consider donating a gift card or two. Gift cards can be for any denomination and can be for local restaurants, stores, services, and experiences. Feel free to drop off any donations to the church office.

The Star Gala committee thanks you for your support!

## BETHLEHEM LUTHERAN CHURCH INVITES YOU TO VACATION BIBLE SCHOOL

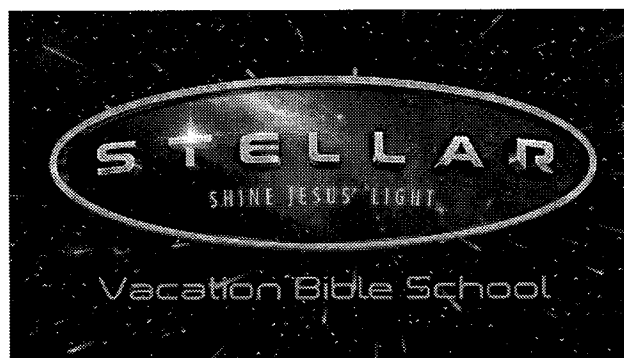
Monday, July 31st — Thursday, August 3rd  
8:30am — 11:30am

Children going into 4K through 5th grade are invited.

Youth going into 6th through 8th grade are invited to attend and join the S.W.A.G. Youth Group.

Volunteers are needed, from high school age to adult.

Registration for attendees and volunteers can be found on our website: [www.ourbethlehem.com](http://www.ourbethlehem.com).



# More June News

## UPCOMING SALES AT NEAT REPEATS

6/1—6/3 = all clothing \$1.00 and hats, scarves, ties & belts, 50% off  
6/7—6/10 = furniture, 50% off  
6/13 = 30% off everything in the store  
6/14—6/17 = jewelry, 50% off  
6/20—6/24 = pictures & frames, 50% off  
6/27—7/1 = linens, 50% off

## JULY VISITOR DEADLINE

If you would like to submit information for the July Visitor, please have your information to the church office no later than noon on Thursday, June 22nd, 2023. Please feel free to email amy.weir@ourbethlehem.com or drop it off in the church office with a note attached that it is for the Visitor.

## WELCOMED THROUGH HOLY BAPTISM

Isla Jewel Reuter - May 7, 2023  
Isabella Jean Smith - May 7, 2023  
Kendahl Lynn Volkema - May 13, 2023  
Sophia Paige Cappilla - May 13, 2023

## A MESSAGE FROM THE LCMS FOUNDATION

Twenty-three years ago, Frieda and Herman put their estate plan together with their attorney, right when Herman retired. Last month, the Lord called Herman home and now Frieda has an appointment next month to go to the attorney to have her will redrafted. The thought of taking Herman's name out of her will pains her. Yet, she is confident that he lives on in Jesus. She is working through that change.

The second thing she is pondering is that in her last will, it referenced all three of their children. Frederick died as a hero in Afghanistan fifteen years ago. As with Herman, Frieda clings to the resurrection hope in Jesus about Frederick as well.

In recent days, she has been considering that in the past, their estate was to be equally divided in three parts to their three children. Frederick passed without a wife or children. Frieda has a desire to make his share become a personal endowment to offer support to her congregation to assist those going through grief, all to make sure people can find their comfort in Jesus, just as she has. Her congregation is talking about a new ministry program, part of which will be directly focused on grief care. She wonders if her endowment could pay for her congregation enrolling in that program. She scheduled an appointment with her LCMS Foundation Gift Planning Counselor for tomorrow to discuss this. For the first time in weeks, she is feeling great energy and joy about her life, working toward this goal.

Your LCMS Foundation Gift Planning Counselor can help. Contact Craig Toerpe, Gift Planning Counselor of the LCMS Foundation to answer questions regarding gifts to family, ministry, or other questions you may have regarding your personal gift plan at 262-707-3005 or [craig.toerpe@lfnd.org](mailto:craig.toerpe@lfnd.org)

**BETHLEHEM EVANGELICAL LUTHERAN CHURCH  
FINANCIAL INFORMATION AS OF**

**March 31, 2023**

<b>ASSETS</b>	<b>Mar 2023</b>	<b>Feb 2023</b>	
Cash	\$ 126,601	\$ 239,680	
Endowment Funds – Principal Only	\$ 840,123	\$ 840,123	
<b>TOTAL ASSETS</b>	<b>\$ 6,484,299</b>	<b>\$ 6,523,911</b>	Includes buildings & land
 <b><u>CURRENT LIABILITIES</u></b>			
General Accounts Payable	\$ 85,214	\$ 91,249	
SYNOD	\$ 2,502	\$ 1,668	
Lutheran High School	\$ 7,500	\$ 5,000	Monthly Pmt \$2,500
 <b><u>LONG TERM LIABILITIES</u></b>			
Mortgage Thrivent	\$ 1,551,177	\$ 1,559,446	Monthly Pmt \$11,778
<b>Total Liabilities</b>	<b>\$ 1,797,913</b>	<b>\$ 1,801,731</b>	
 <b><u>REVENUE</u> (selected accounts)</b>			
Adult Envelopes	\$ 66,347	\$ 61,998	
Tuition	\$ 39,010	\$ 20,080	
School Choice Program	\$ 0	\$ 143,832	
Total Monthly Income	\$ 121,412	\$ 237,267	
Total Monthly Expenses	\$. 208,298	\$ 151,233	
<b>Total Monthly NET INCOME</b>	<b>\$ (86,885)</b>	<b>\$ 86,033</b>	
<b><u>TOTAL REVENUE 2023</u></b>	<b>\$ 481,285</b>	<b>\$ 359,872</b>	
<b><u>TOTAL EXPENSES 2023</u></b>	<b>\$ 486,450</b>	<b>\$ 278,152</b>	
<b><u>NET INCOME 2023</u></b>	<b>\$ (5,165)</b>	<b>\$ 81,720</b>	

**Thank God for all your support! Please check out the new calendar page on our website. Just hit Calendar in the menu bar.**

**BETHLEHEM EVANGELICAL LUTHERAN CHURCH  
FINANCIAL INFORMATION AS OF**

**April 30, 2023**

<b>ASSETS</b>	<b>Apr 2023</b>	<b>Mar 2023</b>	
Cash	\$ 77,556	\$ 126,601	
Endowment Funds – Principal Only	\$ 840,123	\$ 840,123	
<b>TOTAL ASSETS</b>	<b>\$ 6,429,378</b>	<b>\$ 6,484,299</b>	Includes buildings & land
 <b><u>CURRENT LIABILITIES</u></b>			
General Accounts Payable	\$ 79,636	\$ 85,214	
SYNOD	\$ 3,336	\$ 2,502	
Lutheran High School	\$ 10,000	\$ 7,500	Monthly Pmt \$2,500
 <b><u>LONG TERM LIABILITIES</u></b>			
Mortgage Thrivent	\$ 1,542,889	\$ 1,551,177	Monthly Pmt \$11,778
<b>Total Liabilities</b>	<b>\$ 1,786,072</b>	<b>\$ 1,797,913</b>	
 <b><u>REVENUE</u> (selected accounts)</b>			
Adult Envelopes	\$ 66,780	\$ 66,347	
Tuition	\$ 31,551	\$ 39,010	
School Choice Program	\$ 0	\$ 0	
Total Monthly Income	\$ 110,916	\$ 121,412	
Total Monthly Expenses	\$ 146,040	\$ 208,298	
<b>Total Monthly NET INCOME</b>	<b>\$ (35,124)</b>	<b>\$ (86,885)</b>	
<b><u>TOTAL REVENUE 2023</u></b>	<b>\$ 592,202</b>	<b>\$ 481,285</b>	
<b><u>TOTAL EXPENSES 2023</u></b>	<b>\$ 632,491</b>	<b>\$ 486,450</b>	
<b><u>NET INCOME 2023</u></b>	<b>\$ (40,249)</b>	<b>\$ (5,165)</b>	

Our cash position at the end of April stands at \$77,556. Adult envelopes are under our estimated budget monthly amount by \$7,800. We will be receiving our last 2022 - 2023 school year voucher pmt this month for \$143,000. We are approaching our slower summer months. Please encourage other members to attend on a weekly basis, and

**Thank God for all your support!**



## **Bethlehem's Newest Members**

*Please take a moment to read about Bethlehem's newest members.  
They were received into membership  
during the 8:00 am worship service on Sunday, May 21<sup>st</sup>.*

**Miranda Batt and Avery Johnson** enjoy the outdoors, fishing, hiking and biking. Avery enjoys playing the violin. Miranda is a self-employed hairstylist. They attend either the Saturday evening or 10:30 Sunday worship service.

**David, Samantha, Hunter & Levi Hartman** live in Plymouth and like to play outside, do puzzles and play games. David works in HR at Rockline and Sam is a Mammography Tech. They will usually be seen at the 6:00 Wednesday or 8:00 Sunday worship service.

**Bob Launer** is coming back to his Lutheran roots. He is currently employed on the maintenance team with the Oostburg School District. He is a handyman and enjoys sports. You are most likely to see him attending the 8:00 Sunday worship service.

**Troy Haese, Elizabeth, Madisen, Marissa, Everleigh, Emily, Lyla-Rae & August** have a connection with Bethlehem as Troy is married to Tina (Wenzel). They are now a family of 12 who enjoy traveling and making each other laugh.

**Stephanie Laundre** comes to Bethlehem from Elm Grove Lutheran in Milwaukee. We welcome her and pray that she will be a blessing to us as we are a blessing to her.

**Steve and Marijo Pitsch** are joining us from Our Savior in Sheboygan. Marijo enjoys board games, card games and socializing. Steve likes gardening/landscaping, walking and being outdoors. Steve would someday like to join the choir. They attend the 8:00 Sunday service.

**Antonio Sariñana** is a familiar face at Bethlehem, as he is married to Valerie (Zimbal) Sariñana. They have 3 children. Welcome, Antonio!

**Dave, Nancy, Lukas & James Schulze** are excited to make Bethlehem their church home. Dave and Nancy enjoy attending the boy's sporting events. We welcome them and pray the Lord's blessings as they become part of our family.

**Lisa Schulz** loves to read and listen to music. She also enjoys playing games and doing jigsaw puzzles. She loves spending time with her family. You will see her attending one of the Sunday morning worship services.

**Kristin Strauss and Ava Popp** are excited to join Bethlehem. They are related to the Scholz family. Ava will travel to Alaska this summer with the mission team. They prefer the Sunday 10:30 worship service.

**Luke, Lisa & Lydia Timm** are joining us from the Appleton area. Lisa is originally from Plymouth and attended Lutheran High. Luke is a Package Dispatch Supervisor for UPS. Lisa a Speech Language Pathologist for the Sheboygan School District. They like hiking, camping and outdoor activities. Luke enjoys hunting and Lisa enjoys baking. You will usually see them at the 8:00 Sunday worship service.

**John Weir** has a close connection to Bethlehem, with office manager Amy being his wife. He is an IT Implementation Analyst with FIS. His interests include yard work, walking their dog, attending sporting events and playing golf. You will see him attending the Sunday 8:00 service.

**Kim and Karl Wiehr** are making Bethlehem their church home. Karl has been around for a while and now Kim is joining us as well. She is employed by Target. You will see them attending the 8:00 Sunday worship service.

---

**WELCOME**

---



# **IMPORTANT REMINDERS**

## **PERSONAL INFORMATION CHANGES**

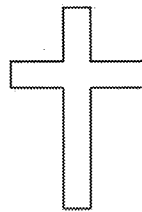
If you have changed your name, address, phone number or email address, please notify the church office with your information. You can call the church office at 920-452-4331 or email amy.weir@ourbethlehem.com with your new/current information. Thank you for your help.

## **ROOM RESERVATION REMINDER**

Just a reminder to make sure that you let the church office know if and when you need to reserve a room so we can be sure that there are no conflicts. Thank you!

## **VISIT US ONLINE**

Bethlehem Lutheran Church and School is on Facebook. Please also visit us at our website, [www.ourbethlehem.com](http://www.ourbethlehem.com). Check out the main page where you will find information about upcoming events and activities. Scroll down to see a calendar of important items. Find helpful information by clicking on the various tabs under *Church* and *School*.



# **VISITOR SPONSORSHIP**

To help us defray expenses for producing and mailing our monthly newsletter, we have established a sponsorship program which includes a congregational contributor for a cost of \$50 per year; and a commercial contributor for the cost of \$120 per year. If interested, please drop off your payment or call the church office at 920-452-4331.

Dennis & Nancy Bearns  
Sandra Fischer  
Leonard Johnson  
George & Karen Haecker  
Jim & Ruth Behrens

### **Congregational Sponsors**

Bev Fischer  
Bob & Lori Gottowski  
Linda Nikisch  
Beverly Bauer

Jim & Judy Heinecke  
Cliff & Gail Schlegel  
Anita Krimmel  
Keith & Christine Wyckoff

Advanced Comfort Systems  
Irish Roofing  
Thrivent / Cesar & Kirsten Lemus

### **Commercial Sponsors**

Boneck Printing  
Irish Studios

Irish Hauling  
Knier Storage